



The crest
IT'S ABOVE ALL

PLAN BOOK

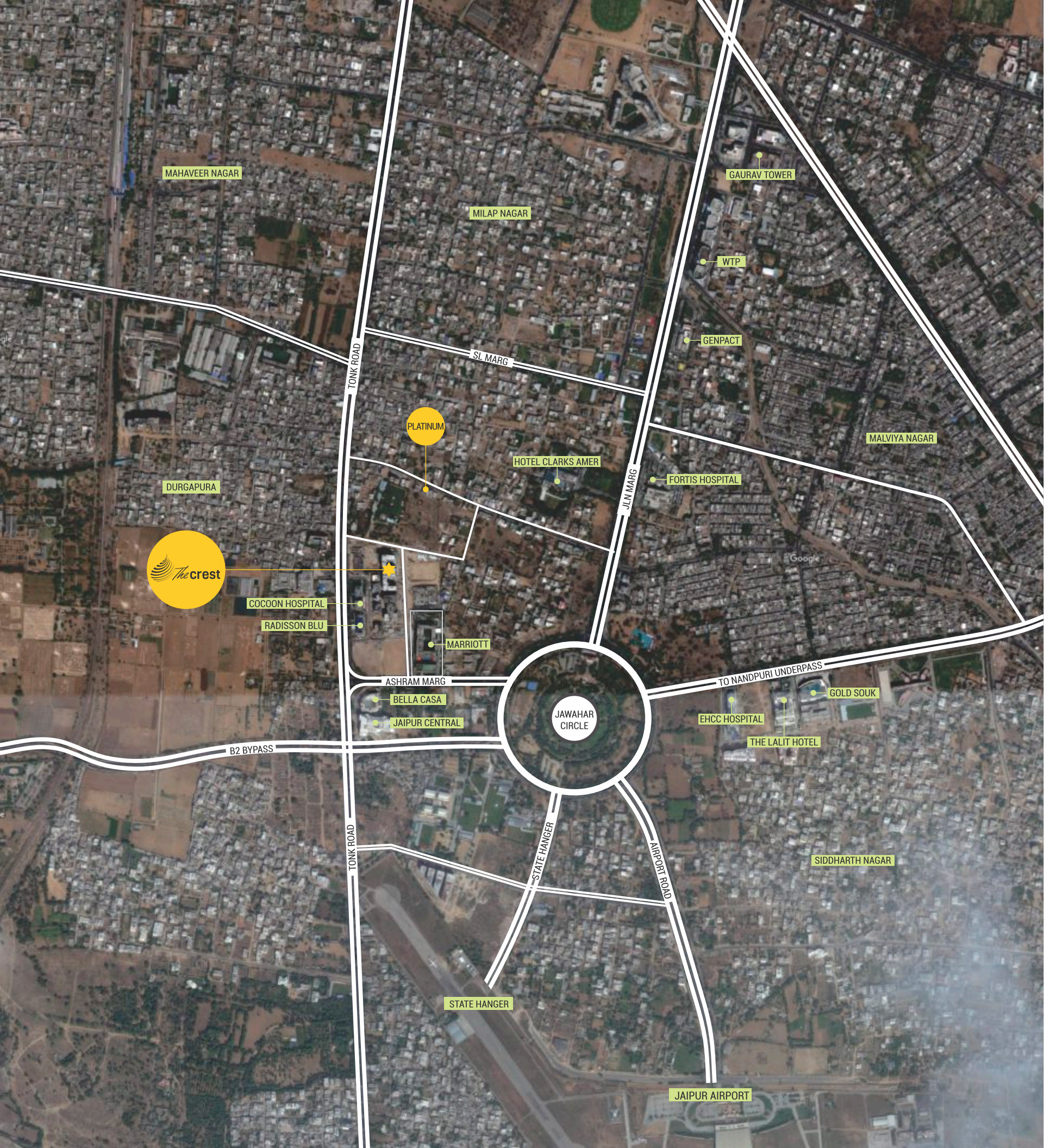
Corporate office : The Crest, Suite 9, A-4 Airport Enclave, Near Marriott, Jaipur-18
+91 9166 66959 | crest@fsrealty.co.in | www.fsrealty.co.in

A VENTURE OF
first stone

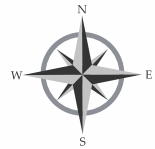
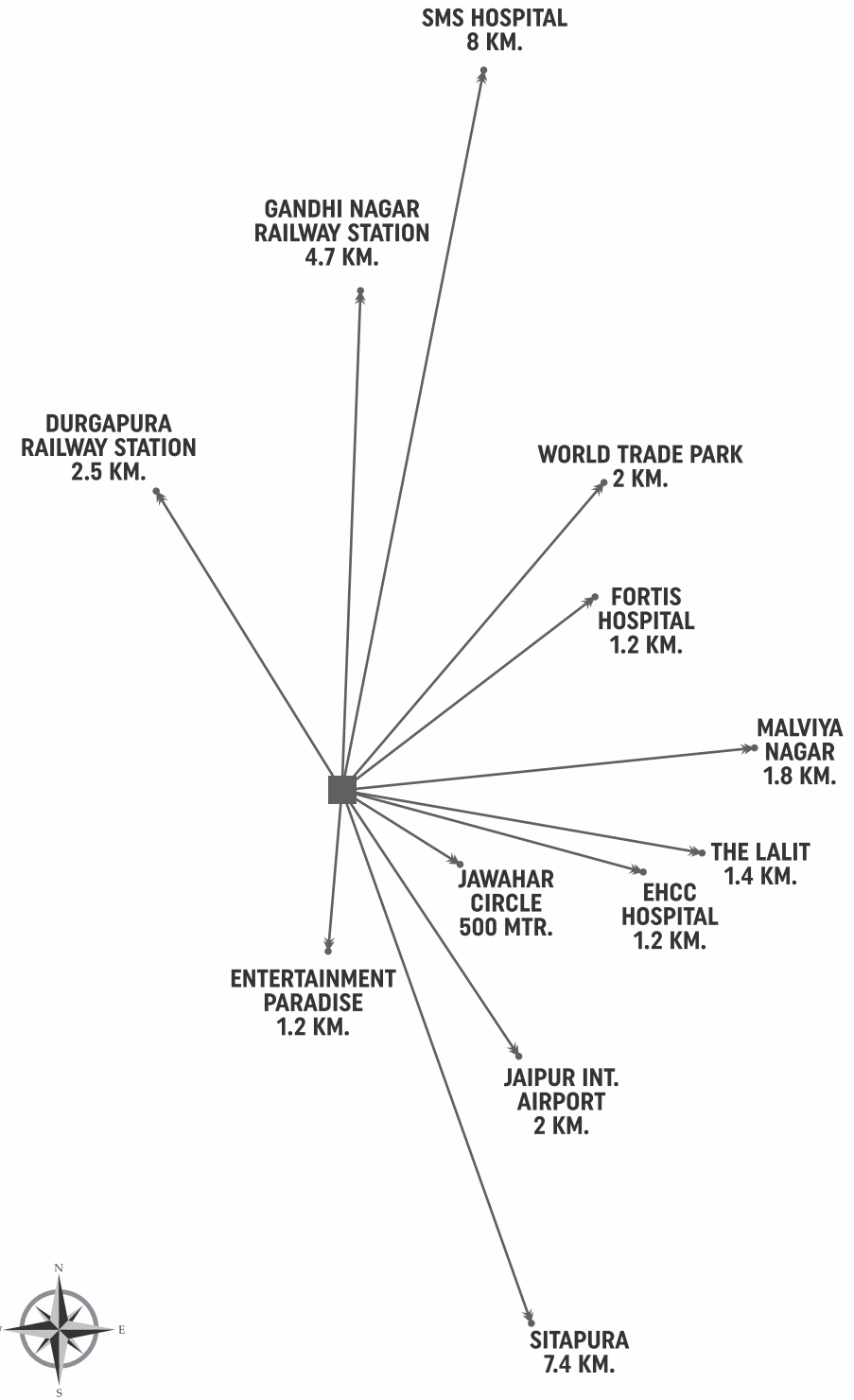
RERA REG. NO. RAJ/P/2017/056

CONCEPT & DESIGN : NINE DEGREE | www.ninedegree.in

This brochure is merely conceptual and is not a legal document. It cannot be treated as a part of the final purchase agreement/s that may be executed from time to time. All dimensions are subject to construction variances. Interior designing used in the plan and images are only for representation purpose. The Developer reserves sale rights to amend architectural specifications during development stages. Soft furnishing, furniture and gadgets are not part of the offering. The content of this published material is indicative and may/may not form part of the final projects.



WORLD WITHIN YOUR REACH



GOOGLE COORDINATES
26.844024, 75.795130



- HOTELS**
- Hotel Radisson Blu
 - Hotel Jaipur Marriott
 - Hotel Bella Casa
 - Hotel Fern
 - Hotel Royal Orchid
 - Hotel Clarks Amer
 - Hotel The Lalit



- HOSPITALS**
- Fortis Hospital
 - EHCC
 - Jaipuria Hospital
 - Cocoon Hospital



- COMMERCIAL**
- Gold Souk Mall
 - World Trade Park
 - Entertainment Paradise
 - Genpact
 - Jaipur Central



- CONVENIENCE**
- Jaipur International Airport

MASTER PLAN



WING 1

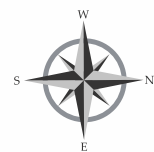
TYPE	CARPET AREA	BUILT UP AREA	SALEABLE AREA
5 BHK-A	2762 SQ. FT.	3841 SQ. FT.	5185 SQ. FT.
4 BHK-A	2105 SQ. FT.	2456 SQ. FT.	3316 SQ. FT.
4 BHK-B	2038 SQ. FT.	2506 SQ. FT.	3383 SQ. FT.

WING 2

TYPE	CARPET AREA	BUILT UP AREA	SALEABLE AREA
3 BHK-A	1669 SQ. FT.	1956 SQ. FT.	2641 SQ. FT.
3 BHK-B	1431 SQ. FT.	1757 SQ. FT.	2372 SQ. FT.
3 BHK-C	1670 SQ. FT.	1954 SQ. FT.	2638 SQ. FT.
4 BHK-D	2150 SQ. FT.	2513 SQ. FT.	3393 SQ. FT.
4 BHK-E	2153 SQ. FT.	2513 SQ. FT.	3393 SQ. FT.

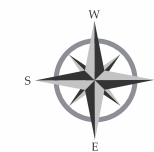
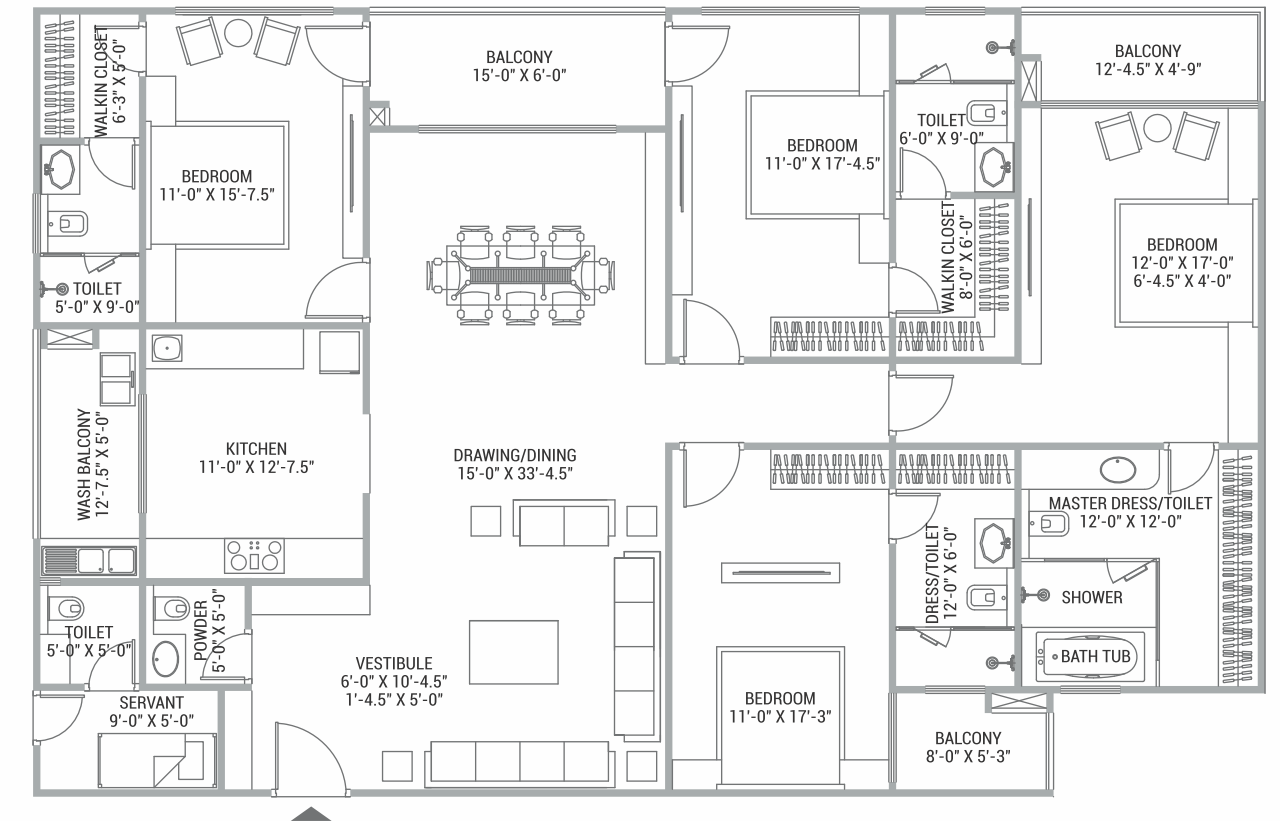
WING 3

TYPE	CARPET AREA	BUILT UP AREA	SALEABLE AREA
4 BHK-A	2105 SQ. FT.	2456 SQ. FT.	3316 SQ. FT.
5 BHK-B	2762 SQ. FT.	3841 SQ. FT.	5185 SQ. FT.
4 BHK-C	2070 SQ. FT.	2538 SQ. FT.	3426 SQ. FT.



4 BHK UNIT PLAN

4 BHK- A (WING 1 & 3) | FLAT NO. 102-1202 & 110-1210 | CRPT AR - 2105 SQ.FT. | B.U.A - 2456 SQ. FT. | S.B.U.A - 3316 SQ. FT.

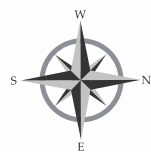
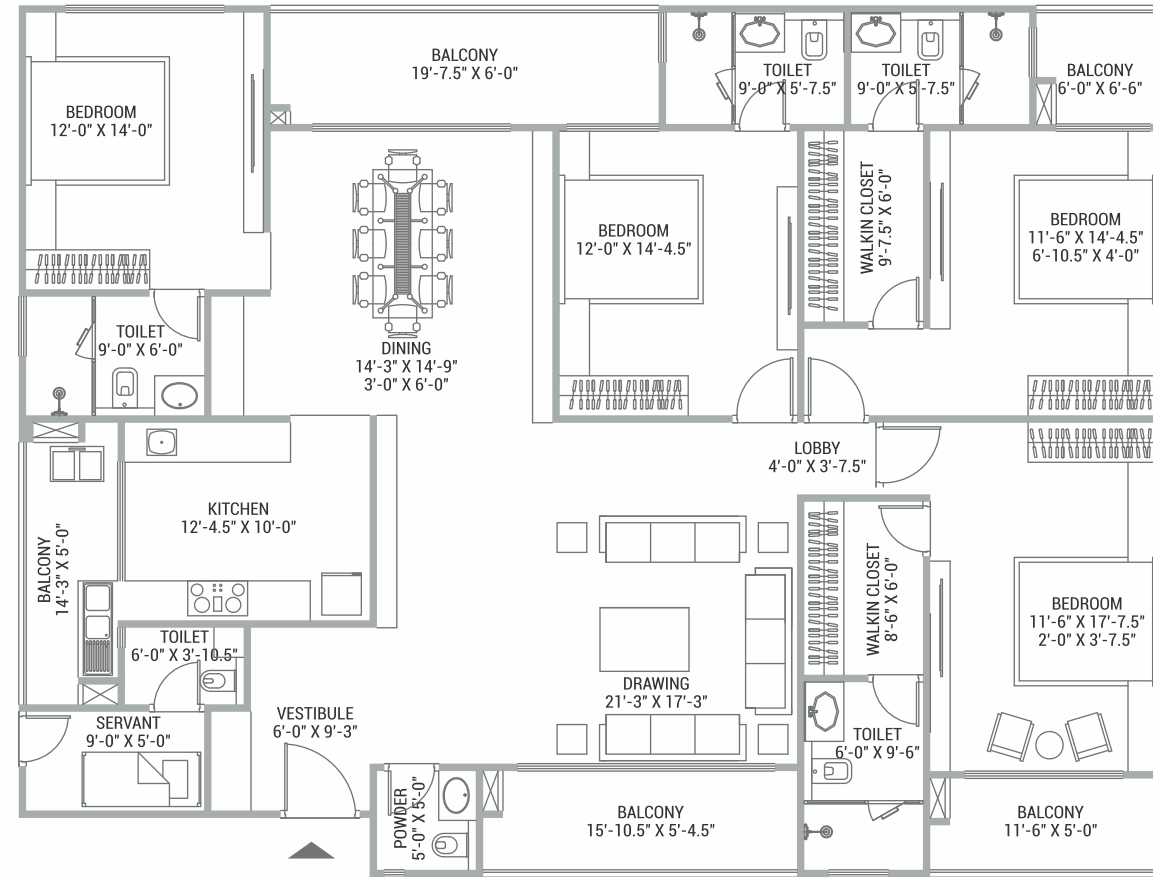


KEY PLAN



4 BHK UNIT PLAN

4 BHK- B (WING 1) | FLAT NO. 103-1203 | CRPT AR - 2038 SQ. FT. | B.U.A - 2506 SQ. FT. | S.B.U.A - 3383 SQ. FT.

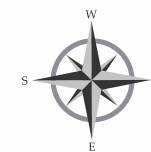
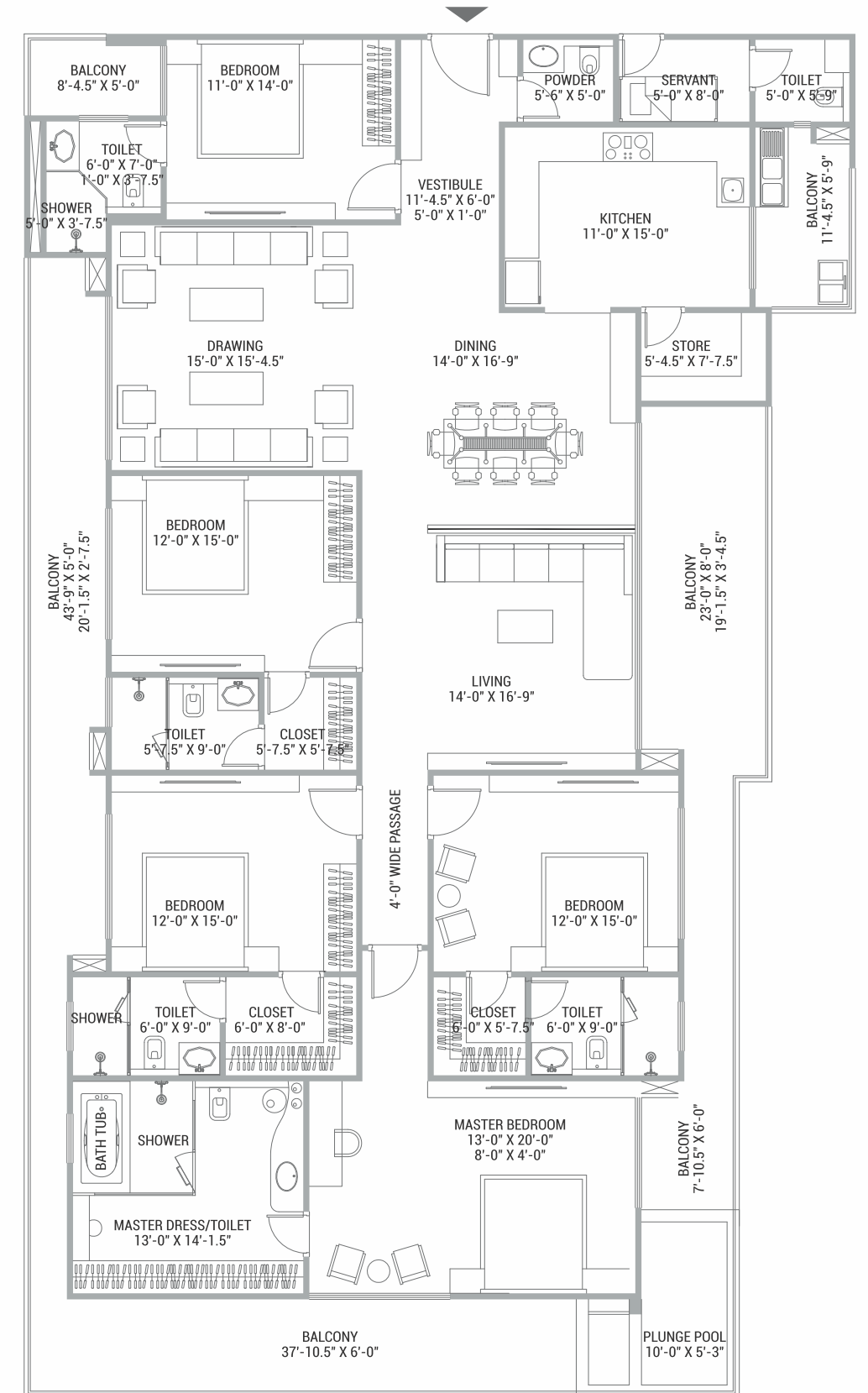


KEY PLAN



5 BHK UNIT PLAN

5 BHK- A & B (WING 1 & 3) | FLAT NO. 101-1201 & 111-1211 | CRPT AR - 2762 SQ. FT. | B.U.A - 3841 SQ. FT. | S.B.U.A - 5185 SQ. FT.

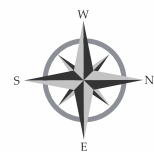
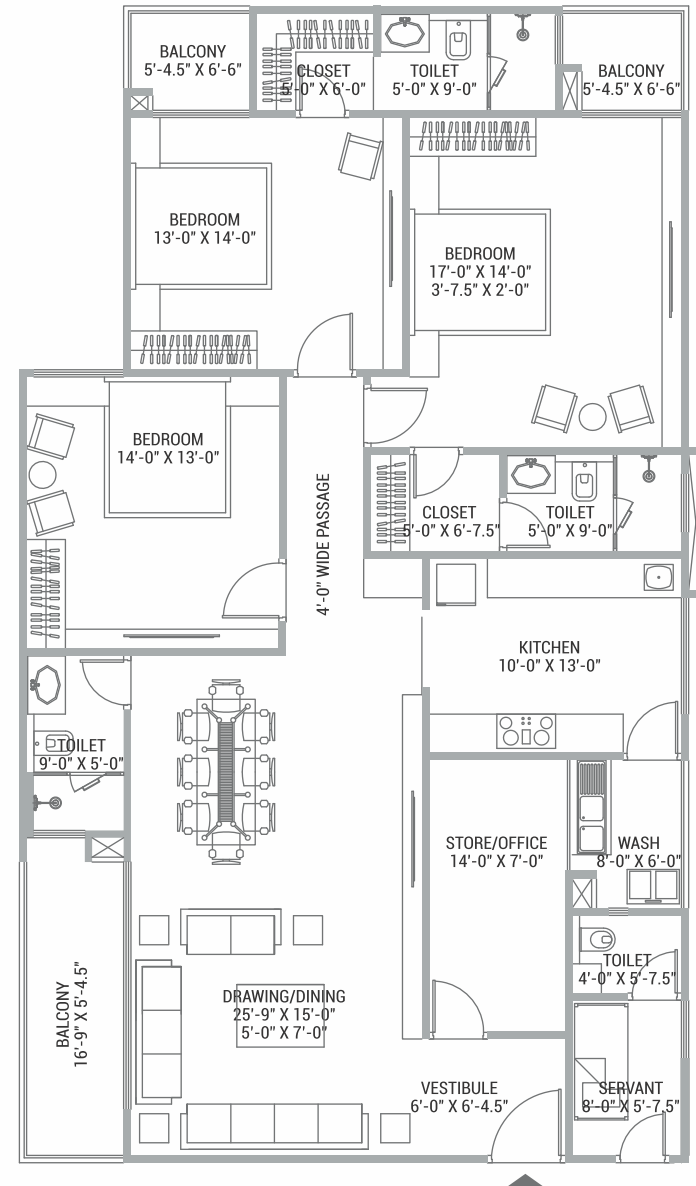


KEY PLAN



3 BHK UNIT PLAN

3 BHK- A & C (WING 2) | FLAT NO. 104-1204/106-1206 | CRPT AR - 1669/1670 SQ. FT. | B.U.A - 1956/1954 SQ. FT. | S.B.U.A - 2641/2638 SQ. FT.

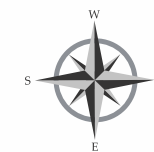
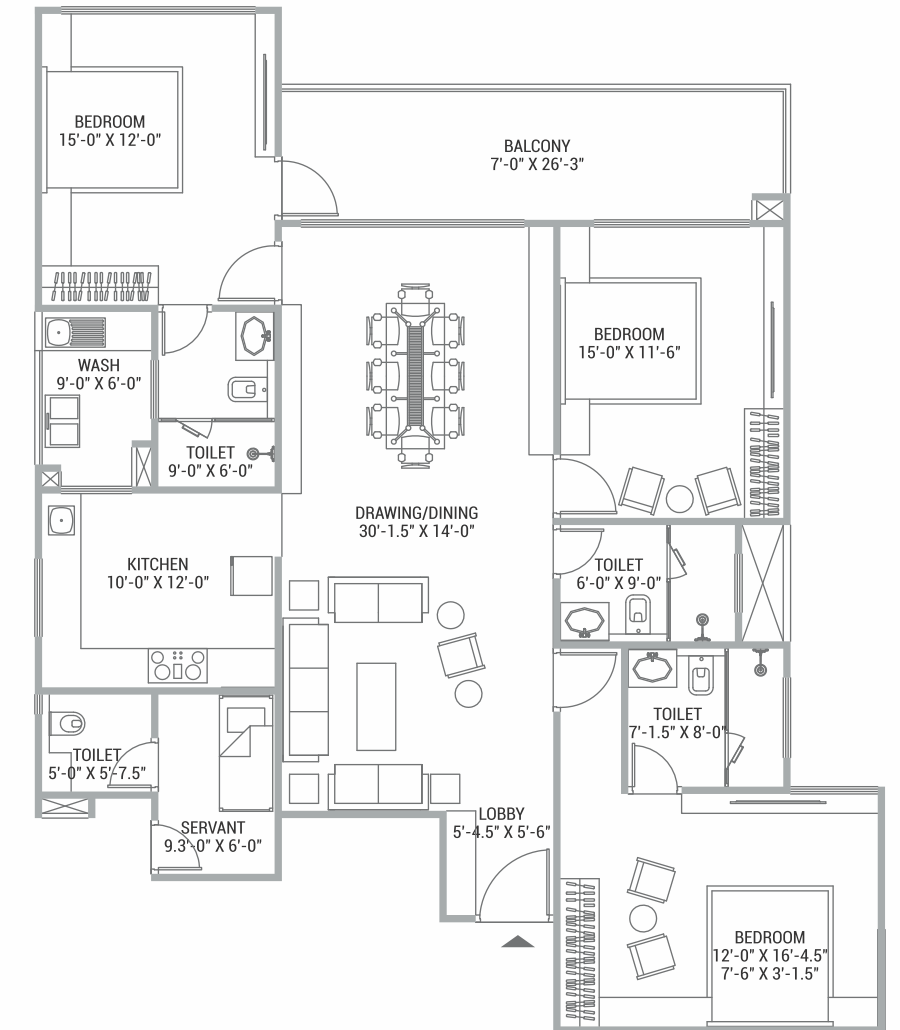


KEY PLAN



3 BHK UNIT PLAN

3 BHK- B (WING 2) | FLAT NO. 105-1205 | CRPT AR - 1431 SQ. FT. | B.U.A - 1757 SQ. FT. | S.B.U.A - 2372 SQ. FT.

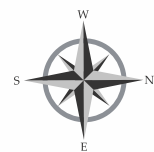
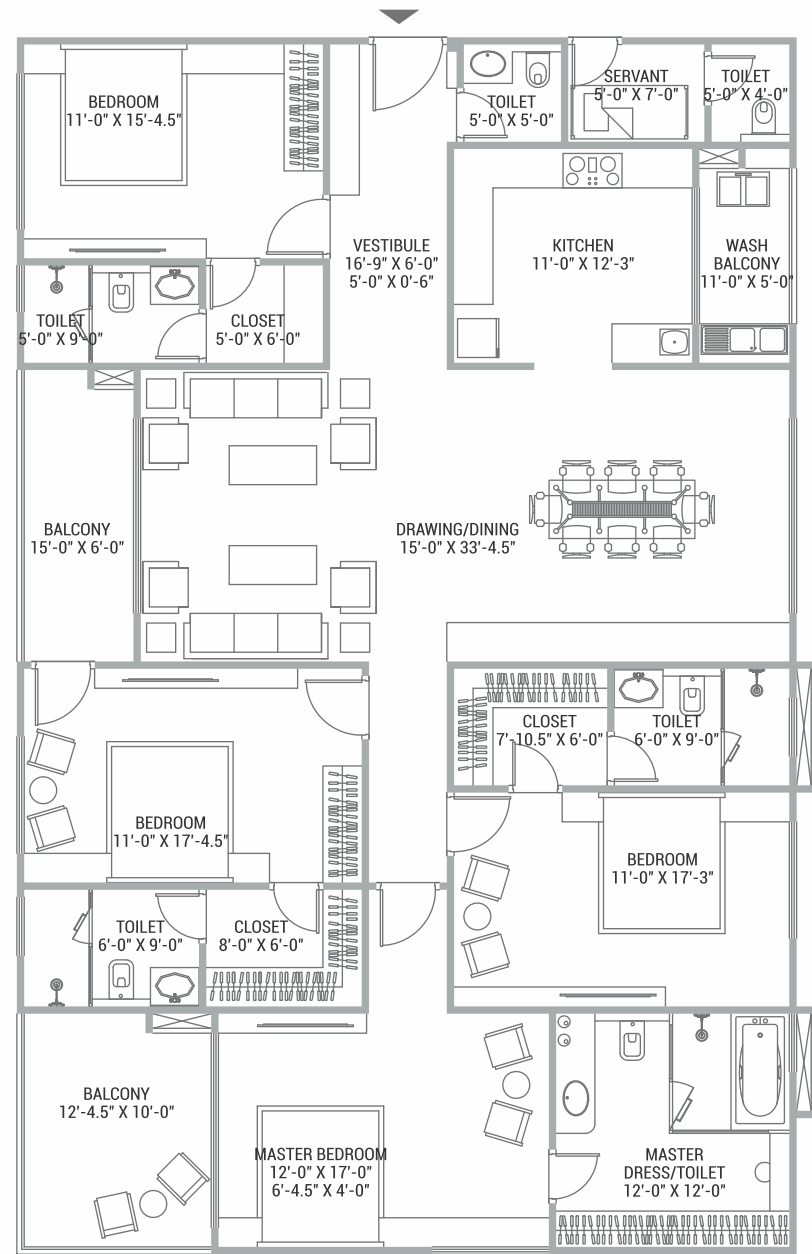


KEY PLAN



4 BHK UNIT PLAN

4 BHK- D (WING 2) | FLAT NO. 208-1408 | CRPT AR - 2150 SQ. FT. | B.U.A - 2513 SQ. FT. | S.B.U.A - 3393 SQ. FT.

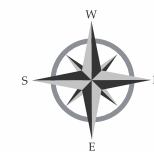
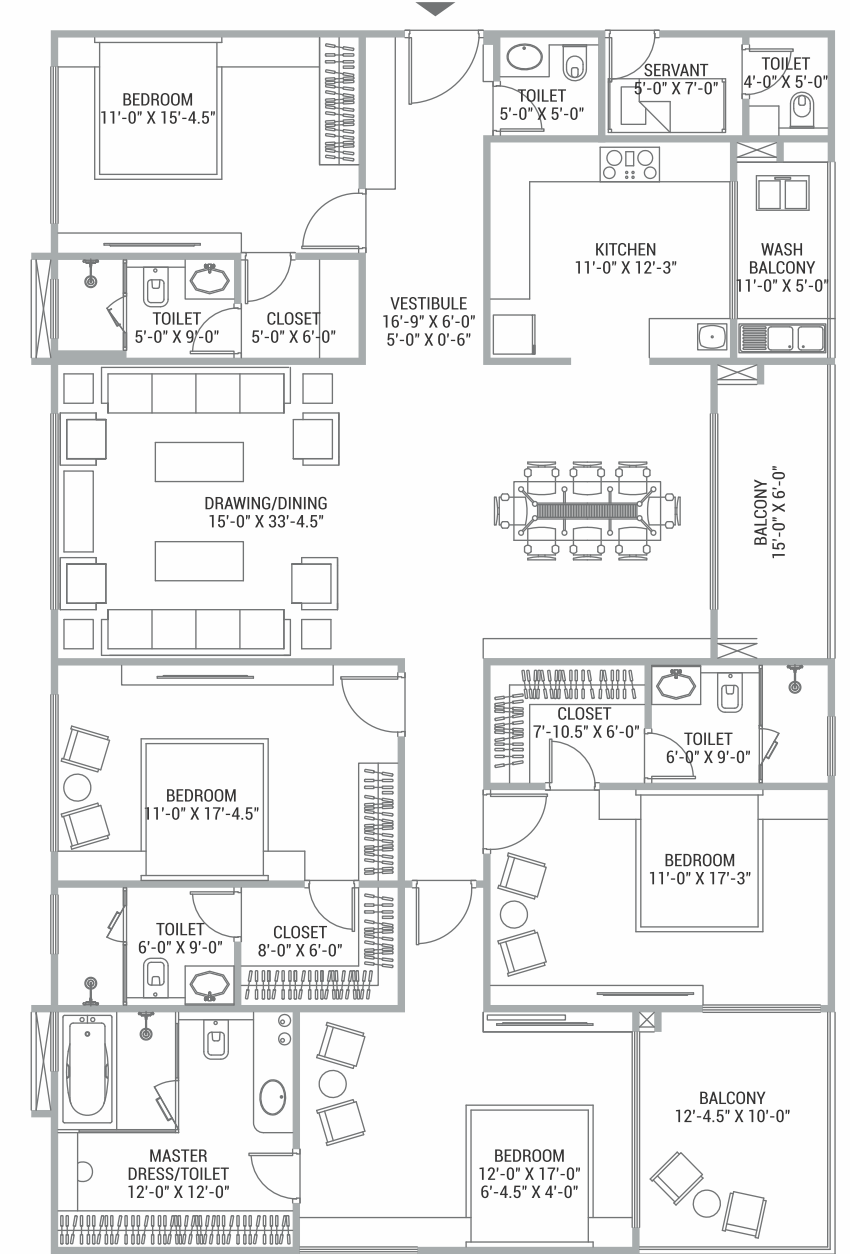


KEY PLAN



4 BHK UNIT PLAN

4 BHK- E (WING 2) | FLAT NO. 207-1407 | CRPT AR - 2153 SQ. FT. | B.U.A - 2513 SQ. FT. | S.B.U.A - 3393 SQ. FT.

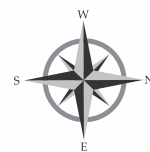
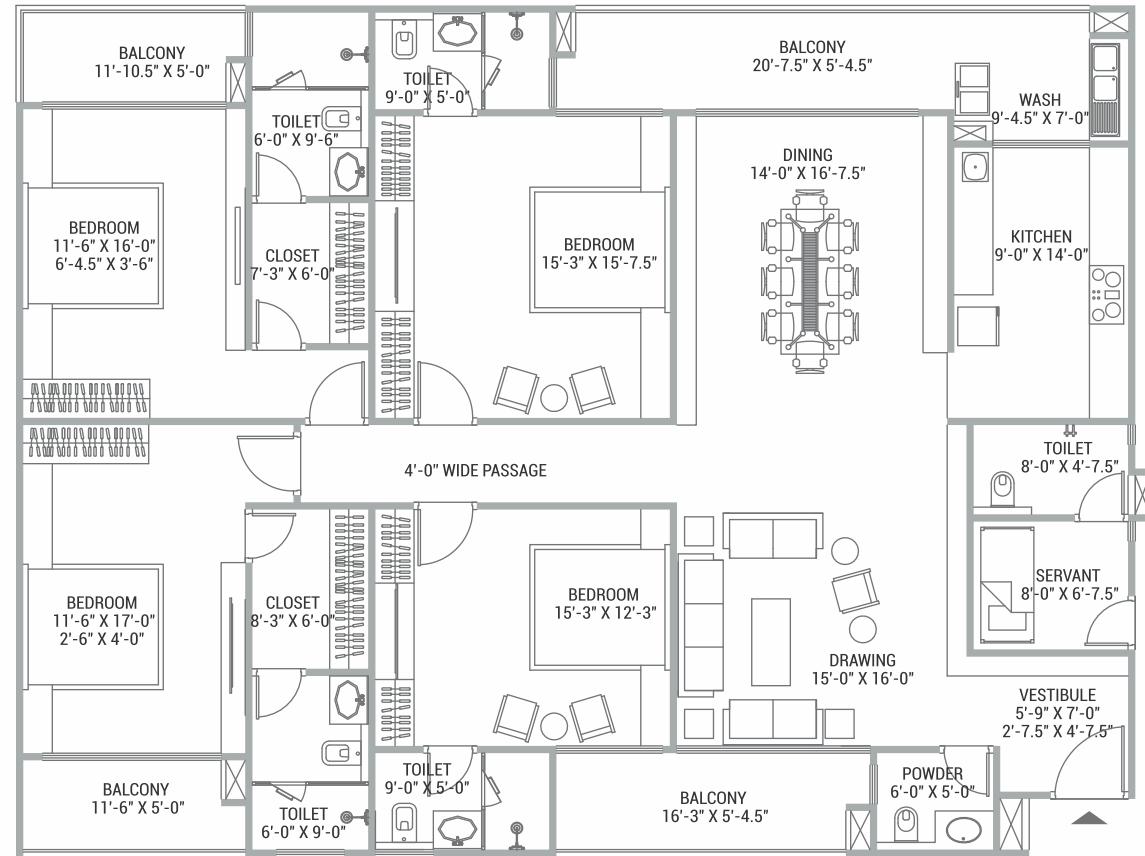


KEY PLAN



4 BHK UNIT PLAN

4 BHK- C (WING 3) | FLAT NO. 109-1209 | CRPT AR - 2070 SQ. FT. | B.U.A - 2538 SQ. FT. | S.B.U.A - 3426 SQ. FT.



KEY PLAN



SPECIFICATIONS

DRAWING/DINING

- IMPORTED MARBLE FLOORING
- DESIGNER DOOR SHUTTER WITH DOOR FRAME AT MAIN ENTRANCE OR EQUIVALENT
- EURO PROFILE ALUMINIUM WINDOWS WITH TWO TRACK SYSTEM
- ACRYLIC EMULSION PAINT ON ALL INTERNAL WALL & CEILING
- HIGH-END ELECTRICAL SWITCHES OF INTERNATIONAL MAKE .

MASTER BEDROOM

- IMPORTED MARBLE FLOORING
- VENEERED / LAMINATED FLUSH DOOR WITH DOOR FRAME
- EURO PROFILE ALUMINIUM WINDOWS WITH TWO TRACK SYSTEM
- ACRYLIC EMULSION PAINT ON ALL INTERNAL WALL & CEILING
- HIGH-END ELECTRICAL SWITCHES OF INTERNATIONAL MAKE .

OTHER BEDROOM

- WOODEN FLOORING OR VITRIFIED TILES
- VENEERED / LAMINATED FLUSH DOOR WITH DOOR FRAME
- EURO PROFILE ALUMINIUM WINDOWS WITH TWO TRACK SYSTEM
- ACRYLIC EMULSION PAINT ON ALL INTERNAL WALL & CEILING
- HIGH-END ELECTRICAL SWITCHES OF INTERNATIONAL MAKE .

MASTER TOILET

- WALL CLADDING UP TO CEILING
- IMPORTED MARBLE FLOORING
- VENEERED / LAMINATED FLUSH DOOR WITH DOOR FRAME OR EQUIVALENT
- COUNTER BASIN WITH IMPORTED MARBLE TOP
- WET AREA WITH GLASS PARTITION
- HAND SHOWER & HEAD SHOWER
- PROVISION FOR GEYSER, EXHAUST FAN
- C P FITTINGS OF INTERNATIONAL BRAND.
- SANITARY WARE OF INTERNATIONAL BRAND.
- GRID FALSE CEILING

OTHER BEDROOM TOILETS

- WALL CLADDING UP TO CEILING
- ANTI SKID TILES FOR FLOORING
- VENEERED / LAMINATED FLUSH DOOR WITH DOOR FRAME OR EQUIVALENT
- COUNTER BASIN WITH GRANITE TOP
- WET AREA WITH GLASS PARTITION
- PROVISION FOR GEYSER, EXHAUST FAN
- C P FITTINGS OF INTERNATIONAL BRAND.
- SANITARY WARE OF INTERNATIONAL BRAND.
- GRID FALSE CEILING

KITCHEN

- FULLY MODULER KITCHEN
- ITALIAN MARBLE
- EURO PROFILE ALUMINIUM WINDOWS WITH TWO TRACK SYSTEM
- GRANITE COUNTER TOP
- HIGH-END ELECTRICAL SWITCHES OF INTERNATIONAL MAKE .
- GAS PIPE LINE AND GAS DETECTOR
- PROVISION FOR GEYSER, EXHAUST FAN & R.O. UNIT
- WASHING MACHINE POINT IN UTILITY AREA

BALCONY & TERRACES

- ANTI SKID TILES FOR FLOORING
- FRAMELESS GLASS RAILING WITH S.S. TOP

AIR CONDITIONING

- COPPER PIPING & CABLING FOR AIR CONDITIONERS



COMMON AREAS DESIGNED BY STUDIO HBA

FLAT INTERIORS DESIGNED BY STUDIO HBA FOR ONE OF THE RESIDENTS AT THE CREST